



# CREATING SPACE FOR LIVING **CEILING BED SOLUTIONS**

Live and sleep comfortably in one and the same space

  
**DW Partnership**  
for all your carpentry needs

At the push of a button, your luxury bed glides gently into the ceiling - making room for your individual requirements.  
Endless possibilities at your fingertips...



#### Features

- Advanced technology and high quality materials
- Easy to operate
- Amazingly quiet
- Safe, reliable and highly resilient
- Maintenance-free
- Suitable for any interior
- Custom built to your individual requirements
- Later retrofit possible
- Available in a variety of mattress and slatted frame sizes
- Powered by an electric motor

LiftBed is a creative solution to your space problem. When you no longer need your bed, just push the button and in seconds it disappears quietly and smoothly into the ceiling.

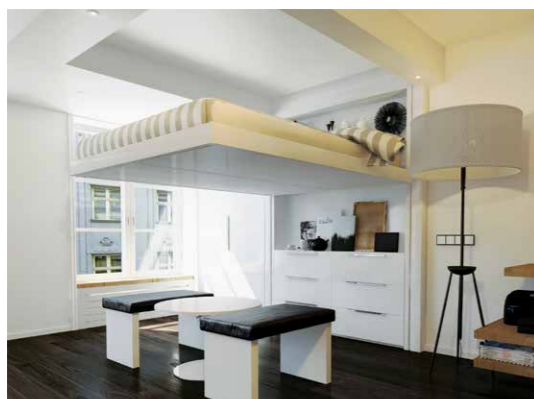
LiftBed's innovative design transforms your bedroom or guest room into a home office, playroom, or spacious living room.



German Engineering  
[www.liftbed.com](http://www.liftbed.com)

LiftBed GMBH & Co. has been providing high quality and safety standards for over 25 years.





## Transform one room into another with Voga Lift Bed

With a push of a button Voga Lift Bed transforms one room into another. It enables a single room space to become a multi-functional living space.

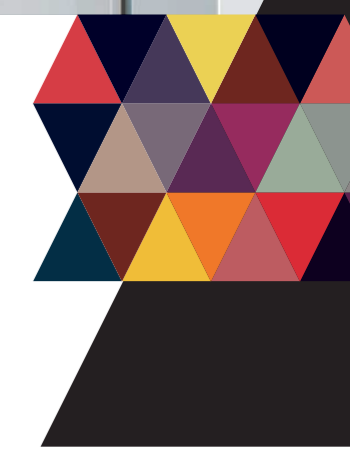
### Features

- Designed for small spaces and apartments (studio, one-bedroom flats, cabins), where there is little space
- Suitable for children's rooms, small occasional guest rooms
- Fast assembly
- Easy to operate
- Safe and reliable
- Powered by an electric motor



Slovenian Voga Lift Beds  
[www.voga.si](http://www.voga.si)

Voga has been providing high quality and safety standards for over 20 years.



## Creating space for living turn room into space...

### ...in hotels

Our bed makes a suite out of your regular hotel room. Here your guest can live and work comfortably or invite others for meetings.

### ...for your vacation home

Even on vacation the sun doesn't always shine! Our bed can convert your bedroom into a cozy living space for your daytime pleasure.

### ...for your home

During the day it can transform your bedroom into a spacious children's room, a home office or a second living room. Your workroom can turn into a guest room whenever you need one.

### ...in small apartments

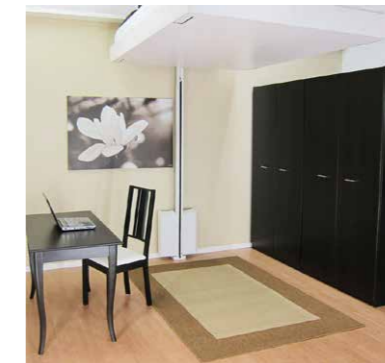
Get a good night's sleep with our bed, then enjoy the extra space and flexibility during the day.



Send your bed to the ceiling...  
and enjoy a spacious room during the day



BedAway bed provides highly efficient way to utilise limited space whilst at the same time becoming a highly desirable and functional place to work, rest and sleep.



The bed stores near the ceiling and effortlessly lowers to the floor. As it nears the floor, legs automatically unfold. When the bed is again raised for storage the legs fold back flush with the bottom of the bed.

### Features

- Can be mounted to a wall or in the middle of the room (second post required)
- Equipped with foldable automatic legs and a telescopic post for different ceiling heights
- Available in white (custom powder coating is available for quantity orders)
- Child safety lock included
- Maintenance free
- Safe and reliable
- Operated manually by counterweight

**BEDAWAY®**  
Swedish BedAway  
[www.bedaway.com](http://www.bedaway.com)

BedAway has been providing high quality and safety standards for over 25 years.

## The new generation of wall beds

Available in many different materials and colours, the loft beds enable customers to furnish limited spaces and free up extra floor space.

Shelves, desks, cupboards, stairs, sofas and wardrobes - an entire range of modular and complementary accessories bring a stylish touch to each and every mezzanine.

### Features

- Completely unique and customised
- Modular and modern design
- Wide choice of colours in three sidelines of natural woods
- The height of the wall structure is adjusted to the height of the ceiling
- Manually moved along up and down
- Fixed to the ceiling, wall and the floor
- The integrated shelves create a stylish bookshelf
- Safe and reliable



French Mobile Beds  
[www.espace-loggia.com](http://www.espace-loggia.com)



Espace Loggia has been providing superior quality and safety standards since the late 1970's.





**DW Partnership**  
for all your carpentry needs

**Showroom (by appointment only)**

DW Partnership Ltd  
Unit 2 F Penn Street Works  
Penn Street  
Amersham  
Buckinghamshire  
HP7 0PX

t: 01494 715 959  
m: 0780 970 2051  
e: [info@ceilingbedsolutions.co.uk](mailto:info@ceilingbedsolutions.co.uk)  
[www.ceilingbedsolutions.co.uk](http://www.ceilingbedsolutions.co.uk)

The best way to see our collection of the innovative ceiling beds is to book a visit in our showroom and receive a quick-guided tour.

Trained in Technology  
Authorised Service Provider

